

Bassett Mechanical Industrial Controls can provide you with complete control systems. From retrofits of old, outdated systems to new energy efficient systems, we can fully design, engineer, assembly, install and commission industrial control solutions.

Type of Systems:

Air Compressors
Environmental Data Collection
Gas Detection Systems
Industrial Refrigeration
Paint Booth Systems
Process HVAC Systems

Typical Operator Interfaces:

Allen Bradley PanelView
Automation Direct C-More
National Instruments Lookout
Progea HMI Software
Rockwell Software RSVIEW 32 &
FactoryTalk View ME & SE

Typical PLC Systems:

Allen Bradley
• CompactLogix
• ControlLogix
• MicroLogix
• SLC
Automation Direct
Siemens

System Features:

Real time interactive graphics
Real time & Historical trending
Custom Reporting
Alarm notifications include:
email, SMS text and dial out
Remote Access capabilities
Web browser access

Industrial Control Networks:

Ethernet IP
Modbus Ethernet
ControlNet
DeviceNet
Profibus

Refrigeration Compressor

Control Panel Upgrades:

Frick Quantum LX
GEA FES GForce

All Upgrades include:

- New Pressure Sensors
- New Temperature Sensors
- Retrofitted in place of old panel
- Programmed and Calibrated to the same settings of the old panel

Design & Engineering:

AutoCAD based control diagrams
• Control Panel Layouts
• Wiring Diagrams
• Network Diagrams
• Wire Pull Diagrams
Onsite field review for Retrofits
Bill of Materials
Control Panels Assembly
PLC Programming
HMI Programming
Complete Documentation
Systems Training Program

We answer to you



Industrial Controls Customers

Bassett Mechanical is an industry leading mechanical contractor specializing in industrial ammonia refrigeration systems of all sizes. Did you know we also design/engineer control systems utilizing the latest technologies? Here are some businesses we work with:

Cold Storage Facilities:

Certco – 2 Locations
Glacier Transit
McLanes Foodservice – 2 Locations
Midwest Cold Storage
Super Valu Foods
Valley Bakers

Ice Cream Novelties:

Cedar Crest Ice Cream
Dean Foods – 2 Locations

Process HVAC Systems:

Great Lakes Cheese
Kimberly Clark Corporation
McCain Foods
Nestle Pizza Company
Pierce Manufacturing

Process Systems:

Amcor Flexibles Healthcare
Appleton Corporation
Arla Foods
Curwood – 3 Locations
Miller Electric
Norse Dairy Systems
Snap On Tools
Tyco/Ansul Fire & Safety
Wisconsin Specialty Protein

Paint Booth Systems:

Gulfstream Aerospace
Oshkosh Corporation

Ice Rink Systems:

City of Houghton
Sun Prairie Hockey Center
Waupaca Expo Center
Waupun Hockey Center

Food Processing:

Agropur (Trega Foods) – 3 Locations
Bel Brands USA
Chermake Sausage
Foremost Farms – 5 Locations
Galloway Company
Golden County Foods
Grande Cheese – 2 Locations
Heinz Frozen Foods – 7 Locations
JBS Packerland Packing
Masters Gallery Foods
McCain Foods – 6 Locations
Nestle Pizza Company – 2 Locations
Ocean Spray
Pace Dairy
Pepsi Bottling
Salms Partners
Saputo Cheese – 3 Locations
Sargento Cheese – 3 Locations
Serv-Ice
TNT Crust
Whitehall Specialties
Wisconsin Cheese Group

We answer to you

Control System Upgrades

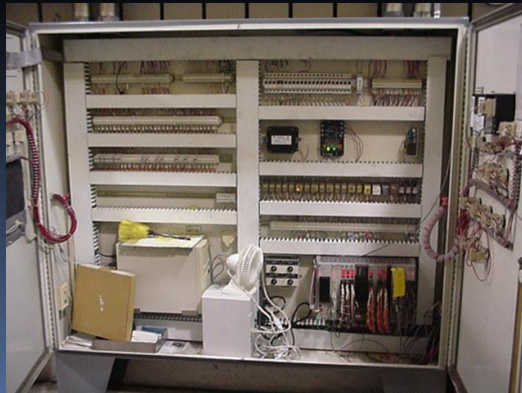
We can provide you with control system upgrades from retrofits into existing panels to migrating existing controls into new control panels.

Pictured below is a retrofit into the existing control panel. The PLC and HMI equipment was relocated to the opposite sides of the panel. All of the existing Hand-Off-Auto switches were relocated to the same door. A new 17" touchscreen was added for operator interface. The PLC I/O modules were pre-wired and the new stainless steel door plates were fabricated prior to the installation date. This limited the system down time for the retrofit installation.

Before



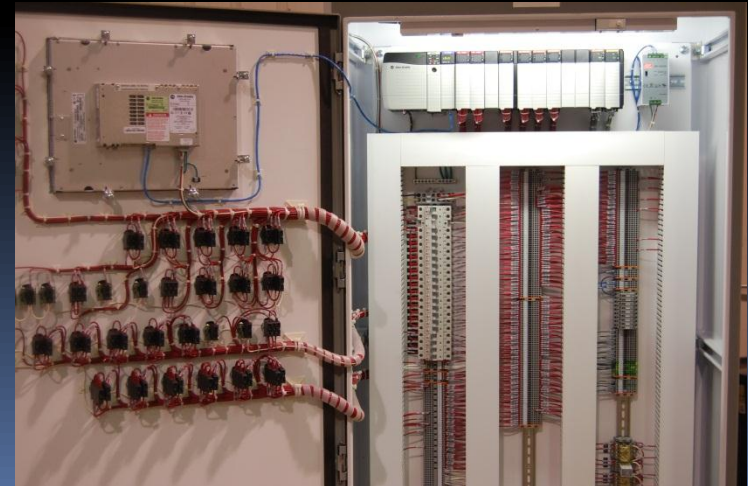
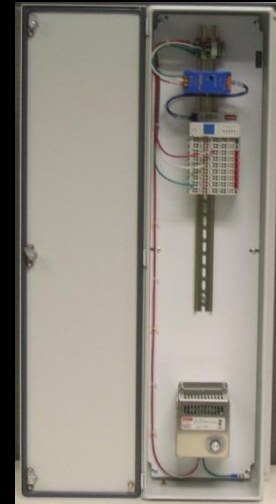
After



We answer to you

Industrial Control Panels

We can fully design and assemble all of your control panels.
From a single pushbutton enclosure to a multi-door free standing enclosure, Bassett Mechanical can assist you with all of your control panel requirements.



We answer to you