



**BASSETT
MECHANICAL**

- CONTRACTING ▪ ENGINEERING
- METAL FABRICATING ▪ SERVICE



TRANE



Certified Preventative Maintenance for Chillers

Keep Your Chiller Running at Peak Operating Efficiency 24/7

Customized maintenance tasking per manufacturer

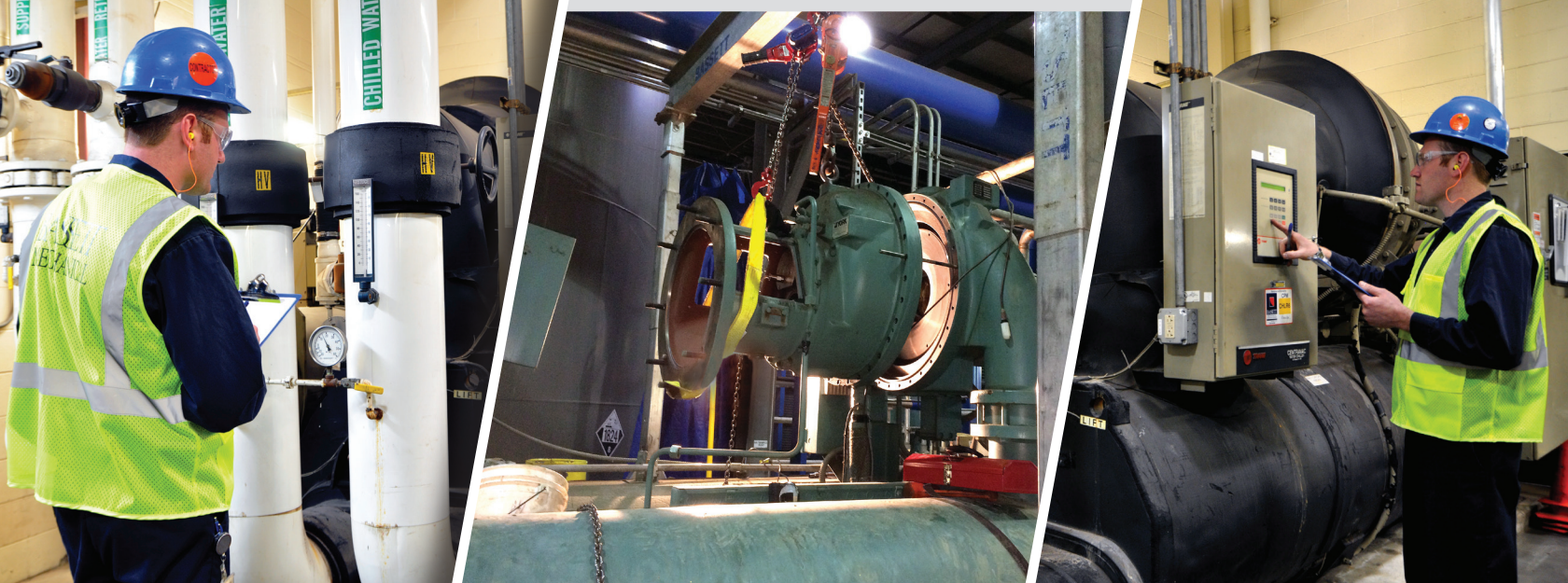
Complete vibration and oil analysis

Full system tear-downs and overhauls done on your timeline

Parts, labor and workmanship warranty

Timely response based on your immediate needs.

Creating Customers for Life®



ISN Network Qualified Contractor

Decrease Energy Use and Maximize Chiller Efficiency

Certified Technicians

Extensive Experience in

*Healthcare • Ethanol Manufacturing • Plastic Fabricating • Power Plants
Process Cooling Facilities • Government Buildings • Food Processing
Critical Data Storage Centers • Pulp & Paper Manufacturing • Schools • Marine*

REDUCE OPERATING COSTS AND AVOID UNEXPECTED DOWNTIME WHILE MAXIMIZING THE RETURN ON YOUR CHILLER INVESTMENT.

From start-up to predictive maintenance to refurbishment and rebuilds, Bassett Mechanical can evaluate, diagnose and service chillers from any manufacturer. Bassett Mechanical's expert technicians can design a customized maintenance plan to optimize efficiency and extend the life of your chiller.

Service Offerings

- Factory-trained technicians for major manufacturers
- Nearly 100 service technicians throughout Wisconsin
- Over 20 project managers and more than 20 designers and engineers on staff for complex projects and future growth
- Customized preventative maintenance programs to minimize downtime
- Complete Bassett refrigerant tracking program for EPA compliance
- Dedicated chiller support team
- Timely emergency service and repairs
- HVAC design-build and service
- PLC Controls
- Equipment overhaul services
- Customized fabrication in Bassett's 268,000 sq. ft. manufacturing facility
- Eddy current testing
- Part Sales

ISO9001
CERTIFIED



BassettMechanical.com • (800) 236-2500 • Info@BassettMechanical.com